



MARIN EMPLOYMENT CONNECTION

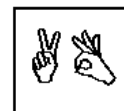
Powered by Workforce Investment Board of Marin County

WORKFORCE INVESTMENT BOARD OF MARIN COUNTY

Wednesday, March 17, 2010 ♦ 7:30 am - 9:30 am
Marin County Health & Human Services Wellness Campus
Connection Center, 3240 Kerner Blvd., San Rafael

AGENDA

- | | | | |
|-------|------|---|--|
| I. | 7:30 | Call to Order & Public Comment | Will Rigney |
| II. | 7:35 | WIB Director & Chair Report
A. Approval of 1/20/10 Meeting Minutes ACTION (<i>Attach-1</i>)
B. WIA Youth Contract Amendment ACTION (<i>Attach-2</i>)
C. WIB Chair report to the Board of Supervisors (<i>Attach-3</i>)
D. WIB Annual Report to CAO (<i>Attach-4</i>)
E. Development of WIB Member Speaking Request Policy | Will Rigney
Racy Ming |
| III. | 7:55 | WIA Strategic 5 Year Local Plan Modification FY09/10 ACTION (<i>Attach-5</i>) | Racy Ming |
| IV. | 8:15 | MEC Report
A. Marin Economic Forum Update
B. Update on H&HS Emergency Contingency Funds (<i>Attach-6</i>)
C. MEC Activity Report (<i>Attach-7</i>)
D. WIA ARRA Contracts Monitoring Report (<i>Attach-8a,b,c</i>)
E. Business Services Representative Report (<i>Attach-9</i>) | Craig Nelson
Racy Ming
Caran Cuneo |
| V. | 8:40 | Executive Committee Taskforce Reports
A. Nominations
B. Employer Outreach
C. Roles and Responsibilities | Joan Capurro
Jennifer Gotti
Craig Nelson |
| VI. | 8:30 | Strategic Planning Committee Report
A. Report on Meetings with Supervisors | Craig Nelson &
Cecilia Zamora |
| VII. | 8:50 | Construction Committee Report
A. MEC Project GREEN Update
B. Green Advisory Council | Bill Scott &
Makini Hassan |
| VIII. | 9:00 | Healthcare Committee Report
A. New Chairs
B. Subsidized Employment for RNs | Jill Magri &
Nanda Schorske |
| IX. | 9:10 | One Stop Steering Committee Report
A. Feedback from Employer Award Discussion Group | Dan Daniels &
Heather Ravani |
| X. | 9:20 | Youth Council Report
A. Recommendation Regarding WIA Youth Eligibility Criteria regarding barriers to employment ACTION | Gene Abbott |
| XI. | 9:30 | Adjourn - Next Meeting May 19, 2010 | Will Rigney |



Late agenda material can be inspected at the Marin Employment Connection (MEC) between the hours of 8 am - 5 pm. The MEC is located at 120 N. Redwood Drive, San Rafael. All public meetings and events sponsored or conducted by the County of Marin are held in accessible sites. Requests for accommodations may be made by calling (415)473-4381 (voice/TTY) or 711 for the California Relay Service or e-mailing disabilityaccess@co.marin.ca.us at least four work days in advance of the event. Copies of documents are available in alternative formats, upon written request.